


## CATERPILLAR CAT336CHD

### Minor Service

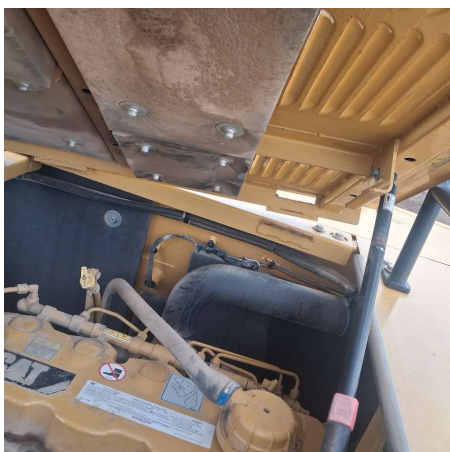
● 2 ● 13 ● 83 ● 9

Inspection Number	RP059141	Customer No	103021
Serial Number	HDF00140	Customer Name	VAUGHAN INFRASTRUCTURE PTY LTD
Make	CATERPILLAR	Customer Email	accounts@vaughancivil.com.au
Model	CAT336CHD	Works Order	RP059141
Equipment Family	35.1-40T HYDRAULIC EXCAVATOR	Completed On	18/05/2026 8:07:44 AM
Asset ID	AHSH73	Inspector	Collin Graham
Location	VAUGHAN INFRASTRUCTURE PTY LTD 145 Condell Park Rd Wilton NSW 2571	PDF Generated On	18/05/2026
Customer		Machine Hours	7301
		Next Meter	7500

### General Info & Comments

#### ● General Info/Comments

250hr service



### TASK SAFETY INSTRUCTIONS

- 1.1 Wear Correct PPE at all times PASS
- 1.2 All isolation and safe work procedures must be followed PASS

- 1.3 Identify task hazards and controls utilising hierarchy or controls model PASS
- 1.4 Ensure a competent operator and spotter is utilised to move mobile equipment PASS
- 1.5 Ensure all mobile equipment is fundamentally stable PASS
- 1.6 Ensure three points of contact is maintained during access and egress PASS
- 1.7 Ensure acceptable housekeeping standards are maintained at all times PASS

#### MACHINE GENERAL RUNNINGCHECKS

- 2.1 Check all work lights, beacon & reverse alarm for operation PASS
- 2.2 Test all dash warning lights, gauges and audible alarms for correct operation PASS
- 2.3 Check idle timer for correct shut down operation PASS
- 2.4 Check operation of all three emergency stop buttons PASS
- 2.5 Check operation of horn PASS
- 2.6 Check operation of reverse camera PASS
- 2.7 Check alternator charge voltage PASS
- 2.8 Check operation of auto grease system by manually activating timer N/A
- 2.9 Check fire system control panel for 'Normal' N/A

#### PM FIRE SUPPRESSION SYSTEM

- 5.1 Ensure fire suppression bottle and components are securely mounted and in good condition N/A
- 5.2 Ensure fire suppression is correctly charged N/A
- 5.3 Inspect last charge date DATE:2026-05-18  
T00:00:00.000000  
0
- 5.4 Check all fire extinguishers are securely mounted and in good condition PASS
- 5.5 Check all fire extinguishers are correctly charged PASS

● 5.6 Inspect last charge date

DATE:2026-05-18  
 T00:00:00.000000  
 0

**PM ENGINE**

● 6.1 Perform engine valve set

N/A

● 6.2 Inspect air intake system hoses, pipes, clamps for signs of dirt ingress

PASS

● 6.3 Inspect engine for oil or fuel leaks

PASS

● 6.4 Inspect engine components for missing clamps

PASS

● 6.5 Inspect exhaust system for signs of leaks, loose bolts or missing clamps

PASS

● 6.6 Inspect turbo for security and signs of leaks

PASS

● 6.7 Inspect condition of exhaust lagging

PASS

● 6.8 Inspect engine mounts for condition and loose hardware

PASS

● 6.9 Inspect alternator mount condition and adjustment

PASS

● 6.10 Inspect wiring condition and security

PASS

● 6.11 Inspect engine belts

PASS

**PM ENGINE COOLING SYSTEM**

● 7.1 Check coolant level

PASS

● 7.2 Check condition of radiator cap

PASS

● 7.3 Check condition of radiator core

PASS

● 7.4 Check cooling system for signs of leaks

PASS

● 7.5 Check hose and clamp condition

PASS

● 7.6 Inspect fan condition and operation

PASS

● 7.7 Inspect radiator and fan guard condition

PASS

**PM SWING TRANSMISSION**

● 8.1 Inspect swing transmission for signs of leaks *PASS*

● 8.2 Inspect swing transmission oil level *PASS*

## PM HYDRAULIC SYSTEM

● 9.1 Check hydraulic oil level *PASS*

● 9.2 Inspect hydraulic cylinders for leaks and security *PASS*

● 9.3 Inspect hydraulic hoses for leaks, damage, security *PASS*

● 9.4 Inspect hydraulic pump condition, leaks, security *PASS*

● 9.5 Check Pilot Accumulator operation as per OEM Maintenance Procedure - Test Boom Down Functionality with engine off *PASS*

## PM FINAL DRIVES

● 10.1 Inspect LHS final drive mount condition for leaks and security *PASS*

● 10.2 Inspect LHS oil level and mag plug condition *PASS*

● 10.3 Inspect RHS final drive mount condition for leaks and security *PASS*

● 10.4 Inspect RHS oil level and mag plug condition *PASS*

## PM UNDERCARRIAGE

● 11.1 Inspect LHS track tension *PASS*

● 11.2 Inspect RHS track tension *PASS*

● 11.3 Inspect tracks for loose/missing bolts *PASS*

● 11.4 Inspect load and carrier rollers for signs of leaks *PASS*

● 11.5 Inspect idlers for signs of leaks *PASS*

● 11.6 Inspect sprocket segments condition *PASS*

● 11.7 Inspect track frame for cracks, lose or missing hardware *PASS*

## PM FRAME AND BODY

●	12.1 Check panels for damage and security	FAIL
●	12.2 Check access steps and walkway condition	PASS
●	12.3 Inspect boom condition – cracks, missing clamps, damaged pipes, excessive movement, lubrication	PASS
●	12.4 Inspect stick condition – cracks, missing clamps, damaged pipes, excessive movement, lubrication	PASS
●	12.5 Inspect quick hitch condition and operation	PASS
●	12.6 Inspect bucket condition – cracks, wear, damage, mounts	PASS
●	12.7 Inspect GET condition and hardware	PASS

#### PM ELECTRICAL SYSTEM

●	13.1 Check battery condition	PASS
●	13.2 Check battery terminal condition	PASS
●	13.3 Check battery security	PASS
●	13.4 Check battery box drain is clear	PASS
●	13.5 Check wiring condition and security	PASS

#### PM GREASE SYSTEM

●	14.1 Check all points for acceptable lubrication	PASS
●	14.2 Inspect grease system operation	PASS
●	14.3 Check grease line condition	PASS
●	14.4 Refill grease tank	N/A
●	14.5 Lubricate bucket linkage	PASS
●	14.6 Lubricate blade linkage	N/A
●	14.7 Lubricate boom & stick linkage	PASS
●	14.8 Lubricate swing bearing	PASS

### PM OPERATOR STATION

<input type="radio"/>	<b>15.1 Check all doors for correct opening and closing adjustments and operation</b>	<i>FAIL</i>
<input checked="" type="radio"/>	<b>15.2 Inspect condition of door seals</b>	<i>PASS</i>
<input checked="" type="radio"/>	<b>15.3 Check window glass and seal condition</b>	<i>PASS</i>
<input checked="" type="radio"/>	<b>15.4 Check mirror condition and adjustments</b>	<i>PASS</i>
<input checked="" type="radio"/>	<b>15.5 Fill window washer reservoir</b>	<i>PASS</i>
<input checked="" type="radio"/>	<b>15.6 Inspect air con vents condition</b>	<i>PASS</i>
<input checked="" type="radio"/>	<b>15.7 Inspect seat belt and mounting hardware</b>	<i>PASS</i>
<input checked="" type="radio"/>	<b>15.8 Inspect seat condition, operation and mounting</b>	<i>PASS</i>
<input type="radio"/>	<b>15.9 Replace cabin A/C filter</b>	<i>N/A</i>

### OIL SAMPLING

<input checked="" type="radio"/>	<b>16.1 Engine</b>	<i>PASS</i>
----------------------------------	--------------------	-------------

### PM POST SERVICE INSPECTION CHECKS

<input checked="" type="radio"/>	<b>17.1 All inspections have been completed and rectified as required</b>	<i>PASS</i>
<input checked="" type="radio"/>	<b>17.2 All safety related defects have been repaired or reported</b>	<i>PASS</i>
<input checked="" type="radio"/>	<b>17.3 All defects have been noted and reported</b>	<i>PASS</i>
<input checked="" type="radio"/>	<b>17.4 All fluids are at correct level and drain plugs tight</b>	<i>PASS</i>
<input checked="" type="radio"/>	<b>17.5 All oil samples have visually been inspected and any notable signs of contamination have been reported</b>	<i>PASS</i>
<input type="radio"/>	<b>17.6 All replaced filters have been cut and inspected and photos added to CAT Inspect and reported to supervisor</b>	<i>N/A</i>
<input checked="" type="radio"/>	<b>17.7 Machine has been recommissioned and ready for operation</b>	<i>PASS</i>
<input checked="" type="radio"/>	<b>17.8 PM service notification marked off in Vision Link</b>	<i>PASS</i>

### DEFECTS IDENTIFIED

● 18.1 DEFECTS IDENTIFIED

*envine hood has failed hinges*

OIL USED

● 19.1 Hydraulic oil

0

● 19.2 Engine oil

0

● 19.3 Slew oil

0

● 19.4 Gear oil

0

● 19.5 Coolant

0

● Site photo

● Site photo

● Site photo

● Site photo

● Site photo

● Site photo

● Site photo

● Site photo

● Site photo

● Site photo

● Site photo

● Site photo

● Site photo

● Site photo

---

● Site photo

---

● Site photo

---

● Site photo

---

● Site photo

---

● Site photo

---

● Site photo